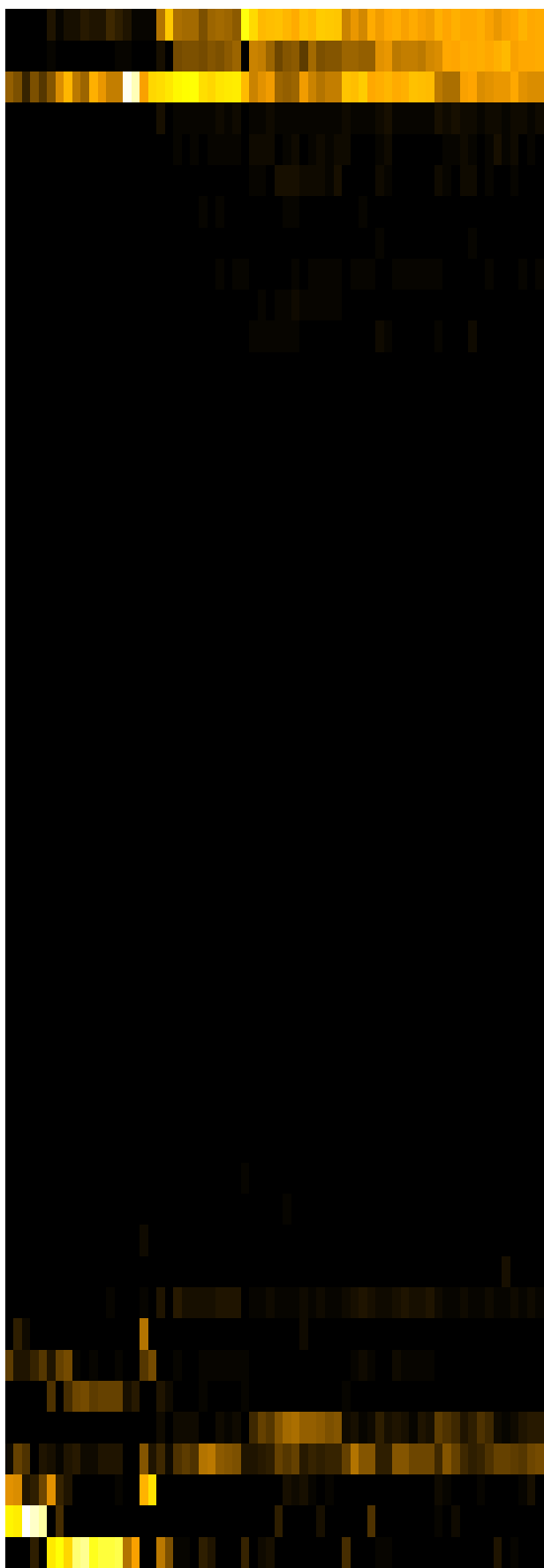
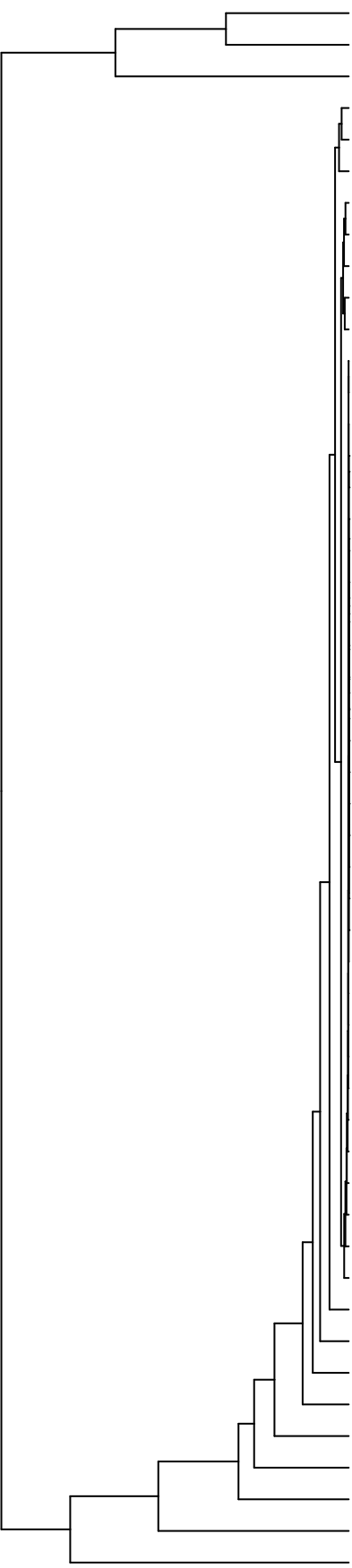


Group006
 C Final -PMA
 A Final -PMA



- Veillonella
- Haemophilus
- Streptococcus
- Eikenella
- Aggregatibacter
- Campylobacter
- Gemella
- Porphyromonas
- Schaalia
- Leptotrichia
- Prevotella
- Lancefieldella
- Saccharibacteria_(TM7)_[G-6]
- Lautropia
- Capnocytophaga
- Pseudomonas
- Acidovorax
- Acinetobacter
- Lachnospiraceae_[G-2]
- Delftia
- Novosphingobium
- Leifsonia
- Agrobacterium
- Sphingobium
- Riemerella
- Microbacterium
- Siccationidurans
- Saccharibacteria_(TM7)_[G-5]
- Phyllobacterium
- Abconditabacteria_(SR1)_[G-1]
- Cutibacterium
- Oribacterium
- Saccharibacteria_(TM7)_[G-1]
- Alloprevotella
- Lachnoanaerobaculum
- Solobacterium
- Stomatobaculum
- Actinomyces
- Catonella
- Staphylococcus
- Serratia
- Granulicatella
- Raoultella
- Rothia
- Salmonella
- Fusobacterium
- Neisseria
- Klebsiella
- Enterobacter
- Citrobacter

- F28914.S572
- F28914.S569
- F28914.S571
- F28914.S574
- F28914.S412
- F28914.S415
- F28914.S414
- F28914.S396
- F28914.S576
- F28914.S397
- F28914.S095
- F28914.S094
- F28914.S089
- F28914.S093
- F28914.S393
- F28914.S400
- F28914.S553
- F28914.S555
- F28914.S559
- F28914.S560
- F28914.S075
- F28914.S252
- F28914.S080
- F28914.S251
- F28914.S253
- F28914.S254
- F28914.S235
- F28914.S079
- F28914.S239
- F28914.S074
- F28914.S077
- F28914.S238

Samples

Genus